

# SUMMARY OF KEY INFORMATION

## The Rex Building

62 Queen Street EC4



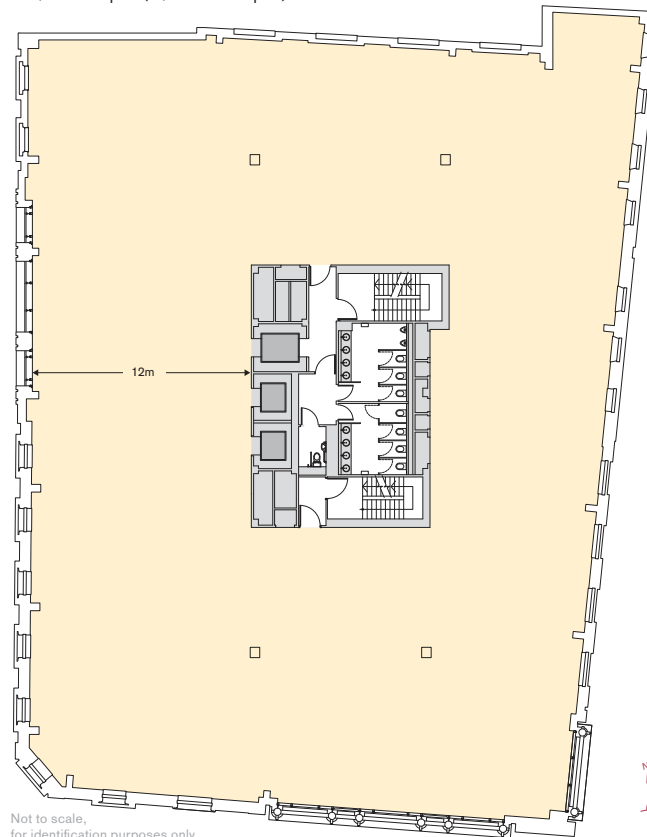
Newly completed and available from 9,944 sq ft

- New build office accommodation
- Four pipe fan coil air conditioning
- Metal tile suspended ceilings
- LG3 / 7 compatible lighting
- Floor to ceiling heights a minimum of 2.65m on floors 1-5 and 3.2m on ground floor
- Fully accessible 150 mm raised floors
- 1.5 m planning grid
- Occupancy ratio of 1:10 sq m
- Floor loading 4KN + 1KN per sq m
- Three Hi-speed passenger lifts

### Typical Floor

Level 2

12,536 sq ft (1,164.6 sq m)



Not to scale, for identification purposes only



Office Area (net internal)	sq ft	sq m
Level 5	11,293	1,049.2
Level 4	12,479	1,159.3
Level 3	LET	
Level 2	12,536	1,164.6
Level 1	12,469	1,158.4
Ground	9,944	923.8
Lower Ground	3,602	334.6
<b>TOTAL</b>	<b>62,323</b>	<b>5,789.9</b>

Note: the above measurements are subject to on-site verification

### Contact

+44 (0)20 7606 1336  
simon.crotty@montagu-evans.co.uk  
toby.pentecost@montagu-evans.co.uk

+44 (0)20 7796 5454  
jeremy.attfield@kingsturge.com  
rupert.perkins@kingsturge.com  
miranda.foster@kingsturge.com

A development by



The developer and their agents give notice that: these particulars are set out as a general outline only, for the guidance of intending purchasers or lessees and do not constitute, nor constitute part of, an offer or contract; all descriptions, dimensions, references to condition and necessary permission for use in occupation and other details are given without responsibility, and any intending purchasers or tenants should not rely on them as statements or representations of fact, but must satisfy themselves by inspection or otherwise as to the correctness of each of them.

All floor areas and measurements are approximate. July 2010.

[www.therexbuilding.com](http://www.therexbuilding.com)